

Saisons

collection



The Saisons
Collection
is luxury
performance
trimmings
woven in
100%
Bella Dura®

Solution Dyed Polyolefin yarns that provide soil, mildew and UV resistance for nearly any environment. Equally beautiful in design and quality for indoors with the duality for outdoors.

Saisons portrays the level of sophistication in aesthetic and styling which has become synonymous with Samuel & Sons. Luxury performance combined with innovative constructions, design and colors make the Saisons Collection truly extraordinary. Patterns take their form through a variety of complex constructions which use multiple weaving techniques to create either dimension or saturation in rendering.

*Shown below
from left to right:
Cord with Tape in Lime,
Saisons Brush Fringe in
Clementine, Saisons Brush
Fringe in Capri, Cord with
Tape in Sun and Saisons
Brush Fringe in Saltaire*

Saisons offers a comprehensive color selection within the neutral, mid-tone and bright palettes of today's global aesthetic. A notable Tassel Tieback and Key Tassel complete this collection of high performance works of contemporary innovation.

*Shown left to right: Saisons
Tassel Tieback in Canvas,
Geranium and Sand Dune*

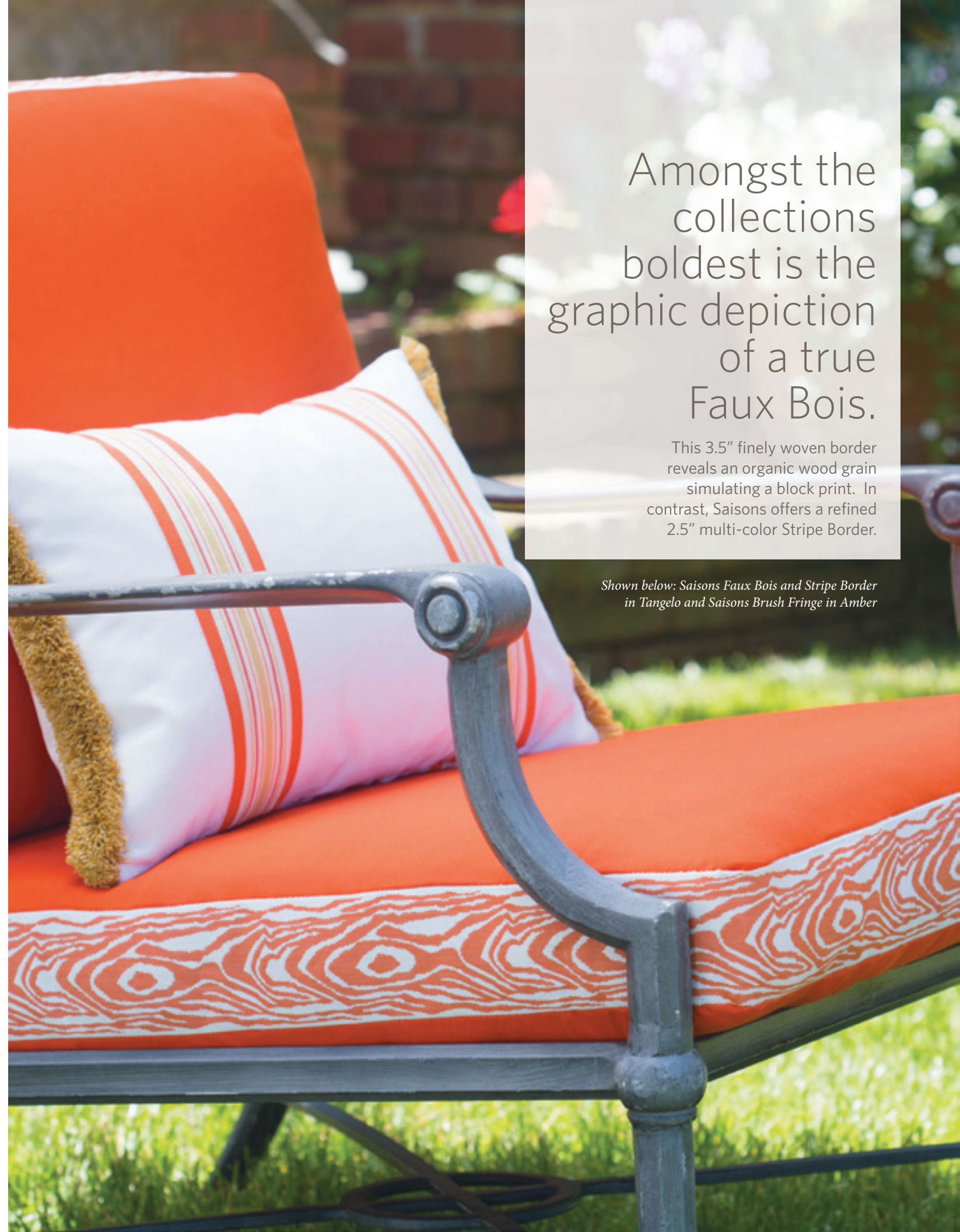


*Saisons Interlink
Border in Flint*

The Saisons Interlink Border

is a versatile geometric border. This distinguished 2.5" border offers a variety of color placement choices through all with high contrast between the pattern and ground. Ivory on Mist, Azalea on Ivory or Geranium on Navy, all are part of the Saison Interlink Border repertoire.

PERFORMANCE



Amongst the collections boldest is the graphic depiction of a true Faux Bois.

This 3.5" finely woven border reveals an organic wood grain simulating a block print. In contrast, Saisons offers a refined 2.5" multi-color Stripe Border.

Shown below: Saisons Faux Bois and Stripe Border in Tangelo and Saisons Brush Fringe in Amber



Shown above: Saisons Diamond Border in Mandarin

The tone-on-tone 3.5" Diamond Border

takes its patterning as well as dimensional interest from sisal carpet designs frequently part of outdoor rooms.



Shown right: Saisons Key Tassel in Leaf and Saisons Cord with Tape in Lime

Shown below: Saisons Cord with Tape in Canvas, Saisons Brush Fringe in Ocean and Mica



Bella-Dura® solution dyed yarns are designed for the ultimate performance in the toughest environments—indoors or out. This revolutionary fiber is exceptionally durable, stain, microbial and UV resistant, bleach cleanable and cradle-to-cradle certified.

Bella-Dura® FIBER SPECIFICATIONS:

Fiber Content	100% Bella-Dura® Solution Dyed Polyolefin
Anti-Microbial & Mildew Resistant	Tested to AATCC TM 30
Anti-Bacterial	Tested to AATCC TM 147
Water Repellent	AATCC TM 22
UV Resistance	Minimum 1500 Hours Lightfast
UV Protection	50+ UPF Tested to AATCC TM 183
Cleanability	Bleach Cleanable - Solution Dyed
Stain Resistance	Excellent - Inherently Stain-Resistant
Fastness	UV testing to 1,500 Hours Direct Exposure
Heavy-Duty Abrasion	50,000 Double Rubs Minimum (ASTM D 4157)
Resistance to Chemicals	Excellent - Bleach-Cleanable
Heavy-Duty Tensile Strength	Exceed 50 lbs. W & F - ASTM D5034
Heavy-Duty Tear Resistance	Exceed 25 lbs. W & F - ASTM D2262
Compliance to CA TB 117	Yes
Compliance to UFAC	Yes
Compliance to NFPA 260	Yes



PERFORMANCE

Saisons Collection



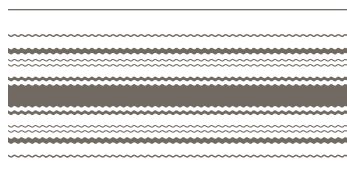
CT-57459 1/8" (4mm)
Saisons Cord with Tape



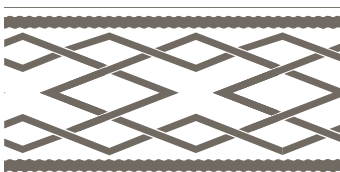
CT-57460 3/8" (9mm)
Saisons Cord with Tape



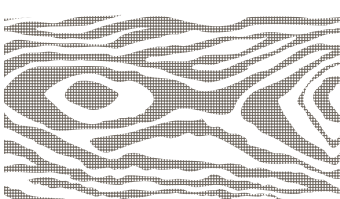
BR-57463 1" (25mm)
Saisons Brush Fringe



BT-57467 2.5" (63mm)
Saisons Stripe Border



BT-57465 2.5" (63mm)
Saisons Interlink Border



BT-57474 3.25" (84mm)
Saisons Faux Bois Border



BT-57475 3.25" (82mm)
Saisons Diamond Border



KT-57478
Height: 5" (13cm)
Saisons Key Tassel



TT-57479
Height: 16" (41cm)
Spread: 34" (86cm)
Saisons Single Tassel Tieback

